

SITE DETAILS AND PROPOSED DEVELOPMENT

SITE LOCATION

The approximately 1.7 ha site is located to the north of Babbage Road at Ordnance Survey National Grid Reference SJ 335 677, as shown in **Figure 1**.

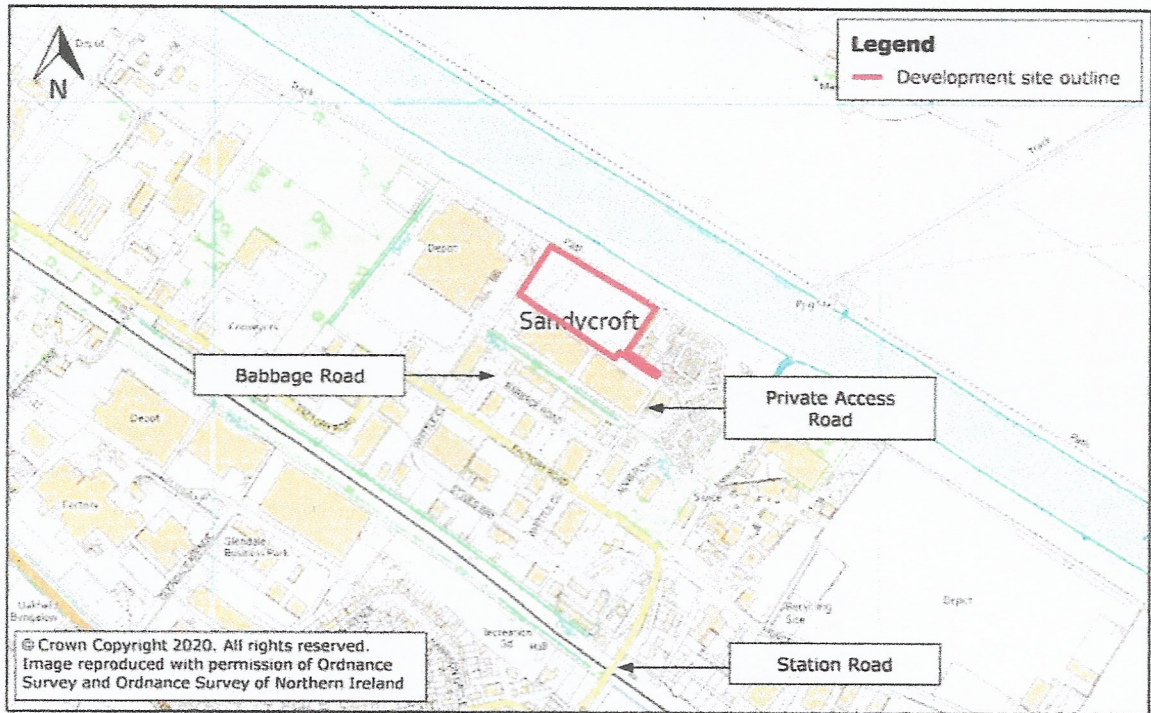


Figure 1: Site Location

EXISTING AND PROPOSED DEVELOPMENT

The site is currently an area of disused land within an existing industrial development.

The proposed development is for a new building to be utilised as an office and training facility (for BGB Scaffolding) with an ancillary open storage area(**Appendix A**).

TAN15 classifies commercial development as less vulnerable land use.